

New York State Electric & Gas Corporation

Jennison Transmission Solution Project

Exhibit E-5

Effect on Communications

This page intentionally left blank.

TABLE OF CONTENTS

<u>Section</u>	<u>Page</u>
EXHIBIT E-5: Effect on Communications	E-5-1
E-5.1 Introduction.....	E-5-1
E-5.2 Communication Systems	E-5-1

* * * * *

LIST OF TABLES

Table E-5-1: Registered Towers Located Within 3 Miles of the Project.....	E-5-2
---	-------

* * * * *

LIST OF FIGURES

Figure E-5-1: Tower Locations	
-------------------------------	--

This page intentionally left blank.

EXHIBIT E-5: EFFECT ON COMMUNICATIONS

E-5.1 Introduction

The Project's¹ construction and operation is not expected to adversely affect communications (e.g., cellular, television, radio). The Applicant will comply with applicable sections of the latest version of the NESC related to appropriate spacing between power and communication cables.

E-5.2 Communication Systems

A review of the FCC databases revealed that there is a total of 27 registered towers located within one mile of the Project. These towers include five FM transmission tower licensees, one AM transmission tower licensee, three cellular tower licensees, 15 microwave tower licensees, one paging transmission tower licensee, one land mobile commercial tower licensee, and one antennae structure licensee in the FCC databases. This tower information is detailed in Table E-5-1, as well as in Figure E-5-1: Tower Locations.

During site reconnaissance, it was noted that buried fiber optic cables are located within, or adjacent to, portions of the Project ROW. Adequate separation between the electric transmission lines and communication facilities will be maintained. As part of final design, the Applicant will utilize Dig Safely New York and will be in communication with third parties that have underground communication cables within or adjacent to the Project ROW to ensure that the precise locations of the communication facilities are shown on the construction drawings and that appropriate clearances are provided.

A portion of the Project will intersect an active CP railroad. As part of final design, CP will be consulted to determine the location of any communication facilities associated with railroad operations. These communication facilities will be protected during construction. Railroad communication facilities currently coexist with other electric transmission facilities within the railroad ROW, and the operation of the Project's electric transmission facilities is not expected to interfere with railroad communications.

¹ For clarity and consistency, the Application includes a Master Glossary of Terms that defines terms and acronyms used throughout the Application.

Table E-5-1: Registered Towers Located Within 3 Miles of the Project

Tower ID (Map Label)	Licensee	Call Sign	Facility ID, License ID, or Registration Number	Latitude (Decimal Degrees)	Longitude (Decimal Degrees)	Distance from Proposed ROW (miles)	Base Elevation² (ft above mean sea level)	Support Structure Height (ft)	Overall Structure Height (ft)
FM Transmission Towers									
1	Calvary Baptist Church	W249AS	8396	42.5019	-75.4842	0.75	N/A ³	N/A	N/A
2	CDO Broadcasting, Inc.	WCDO-FM	9686	42.2925	-75.3675	0.24	N/A	N/A	N/A
3	Family Life Ministries, Inc.	W293BE	138951	42.4892	-75.5064	0.5	N/A	N/A	N/A
4	The State University of New York	W210BL	92871	42.5064	-75.4928	0.37	N/A	N/A	N/A
5	Townsquare Media Oneonta License, LLC	WBKT	73139	42.4356	-75.5131	0.37	N/A	N/A	N/A
AM Transmission Towers									
6	Double O Central New York Corp.	WCHN	13826	42.5064	-75.4928	0.35	N/A	N/A	N/A
Cellular Towers									
7	Bell Atlantic Mobile Systems, LLC	KNKQ423	N/A	42.503	-75.500556	0.06	N/A	N/A	N/A
8	New Cingular Wireless PCS, LLC	KNKN633	N/A	42.2925	-75.365833	0.21	N/A	N/A	N/A
9	New Cingular Wireless PCS, LLC	KNKN827	N/A	42.268083	-75.4655	0.68	N/A	N/A	N/A
Microwave Towers									
10	City of Norwich	WQHK782	2940292	42.531111	-75.5245	0.99	1,010	0.0	0.0
11	Conterra Ultra Broadband, LLC	WQVE363	3662864	42.268083	-75.465472	0.68	1,002	57.6	58.8
12	Conterra Ultra Broadband, LLC	WQVE364	3662865	42.268083	-75.465472	0.68	1,002	0.0	0.0
13	Delaware County Emergency Services Dept.	WQYH717	3853027	42.292917	-75.364278	0.21	2,107	76.2	76.2

² Derived from NYS ITS Geospatial Services High-Resolution Bare Earth Digital Elevation Model: <https://data.gis.ny.gov/maps/sharegisny::latest-dem/about>.

³ Information was unavailable for those towers designated as "N/A".

Tower ID (Map Label)	Licensee	Call Sign	Facility ID, License ID, or Registration Number	Latitude (Decimal Degrees)	Longitude (Decimal Degrees)	Distance from Proposed ROW (miles)	Base Elevation² (ft above mean sea level)	Support Structure Height (ft)	Overall Structure Height (ft)
14	Delaware County Emergency Services Dept.	WQYH719	3853029	42.292917	-75.364278	0.21	1,837	76.2	76.2
15	State of New York, Division of State Police	WIR25	986694	42.292583	-75.367	0.24	1,896	62.5	65.5
16	State of New York, Division of State Police	WIR35	986702	42.292583	-75.367	0.24	1,100	54.8	60.6
17	State of New York, Division of State Police	WIR36	986703	42.292583	-75.367	0.24	1,896	0.0	0.0
18	State of New York, Division of State Police	WQNT645	3290551	42.292583	-75.367	0.24	1,896	0.0	0.0
19	Townsquare License, LLC	WPJE683	1037028	42.506333	-75.492306	0.37	1,478	74.1	75.0
20	Townsquare License, LLC	WPJE684	1037029	42.530528	-75.522667	0.89	1,008	5.8	5.8
21	Townsquare License, LLC	WPJE684	1037029	42.506333	-75.492833	0.34	1,008	5.8	5.8
22	Townsquare License, LLC	WPJE685	1037030	42.506333	-75.492306	0.37	1,478	74.1	75.0
23	Uniti Fiber, LLC	WQTF919	3555681	42.2925	-75.365833	0.21	1,875	0.0	0.0
24	Uniti Fiber, LLC	WQTF935	3555697	42.2925	-75.365833	0.21	1,875	54.9	59.4
Paging Transmission Towers									
25	U-Page, Inc.	KNKI693	L00000831	42.292556	-75.365833	0.21	N/A	N/A	N/A
Land Mobile Commercial Towers									
26	Citizens Telecommunications Company of New York, Inc.	WNNL914		42.2925	-75.367222	0.24	N/A	N/A	N/A
Antenna Structure Registrants									
27	Delaware County		1287086	42.292694	-75.36725	0.25	N/A	N/A	N/A

Radio and television interference from an electric transmission line may, under certain circumstances, be caused by corona around the conductor. Corona is a small electrical discharge that creates ionized air close to a transmission line conductor and sometimes results in a small amount of noise that could conflict with radios and televisions. Generally, transmission lines below 230kV (all the transmission lines to be replaced as part of the Project are below this voltage) do not cause interference with radio or television reception. The mandatory transition of television broadcasts from analog to digital signals further reduces the likelihood of noise interference from a transmission line.

Microwave transmissions are typically point-to-point and interference with microwave transmissions is usually caused by obstructions between those points. The Applicant expects that the Project will not interfere with microwave transmissions because most of the Project will be a rebuild of existing lines on structures designed to be no more than 30-45 feet taller than the existing structures.

The Applicant expects that the Project will not interfere with cellular communications. The closest cellular tower (Tower ID 23, Figure E-5-1) is located approximately 300 feet from the Project ROW. Currently, no interference exists with the Existing Lines, and the Project's increase in structure heights is not expected to cause any new impacts to cellular communications.

If the Applicant receives any complaints of suspected interference with radio, television or other communications from the Project, the complaints will be evaluated and, if determined to be caused by the Project, the Applicant will work to resolve any interference.

New York State Electric & Gas Corporation

Jennison Transmission Solution Project

Exhibit E-5

Effect on Communications

Figures

This page intentionally left blank.

New York State Electric & Gas Corporation

Jennison Transmission Solution Project

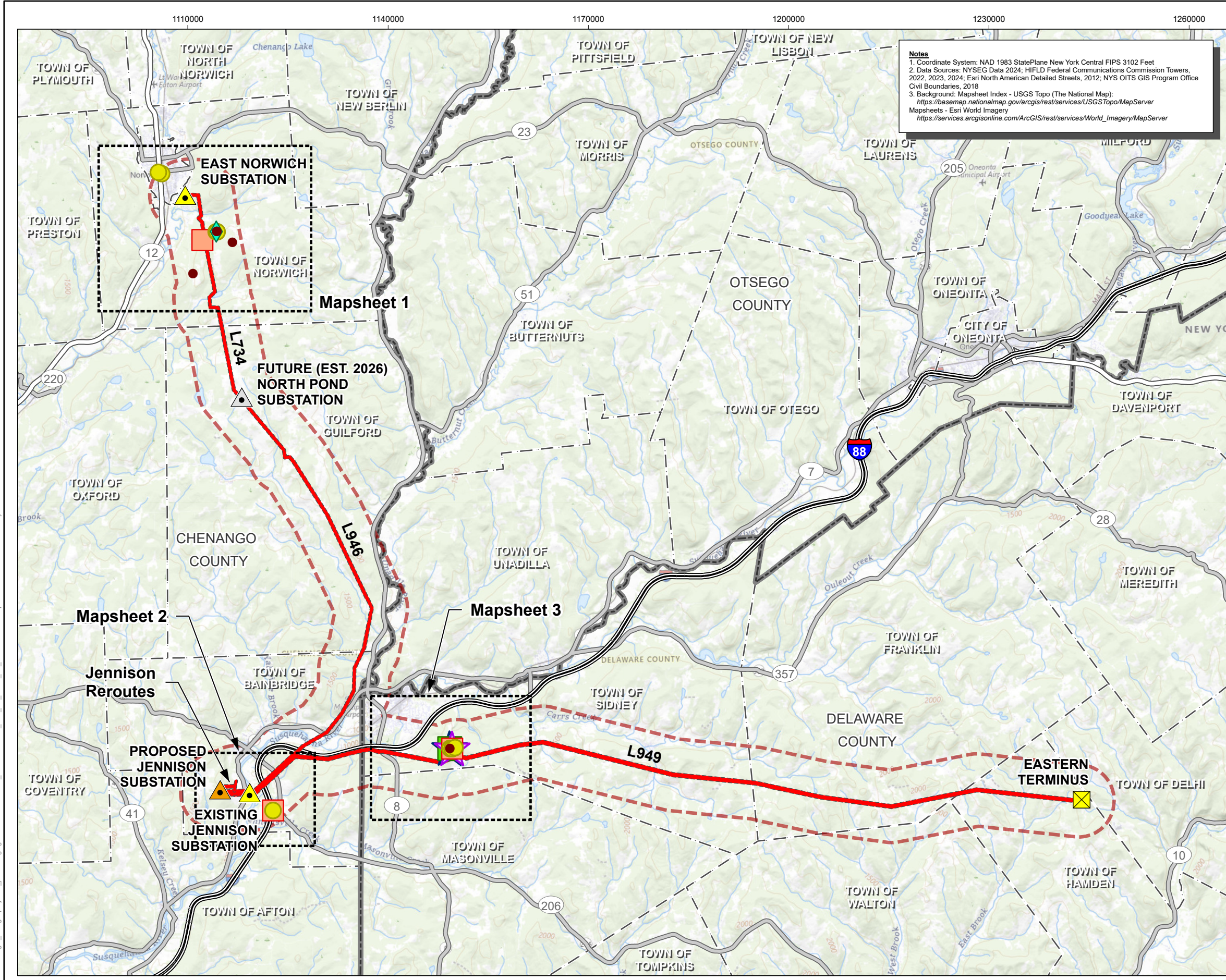
Exhibit E-5

Effect on Communications

Figure E-5-1

Tower Locations

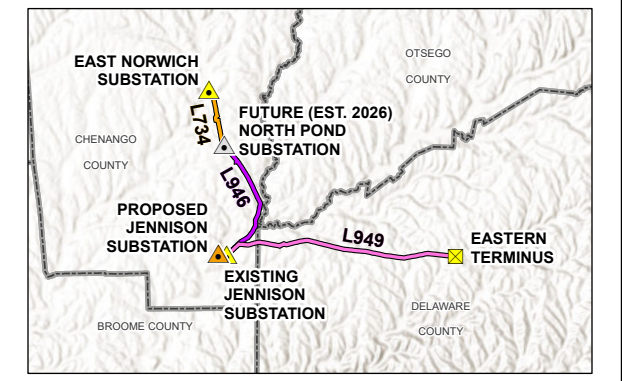
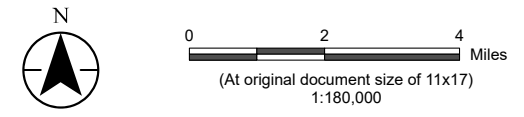
This page intentionally left blank.



Notes
 1. Coordinate System: NAD 1983 StatePlane New York Central FIPS 3102 Feet
 2. Data Sources: NYSEG Data 2024; HIFLD Federal Communications Commission Towers, 2022, 2023, 2024; Esri North American Detailed Streets, 2012; NYS OITS GIS Program Office Civil Boundaries, 2018
 3. Background: Mapsheet Index - USGS Topo (The National Map):
<https://basemap.nationalmap.gov/arcgis/rest/services/USGSTopo/MapServer>
https://services.arcgis.com/ArcGIS/rest/services/World_Imagery/MapServer



- Jennison Transmission Solution Project**
- Eastern Terminus
 - Substation, Existing
 - Substation, Future
 - Substation, Proposed
 - Proposed Right-of-Way
 - 1-Mile Project Radius
 - Mapsheet Exent (with Sheet Number)
- Federal Communications Commission (FCC) Tower**
- FM Transmission Tower
 - AM Transmission Tower
 - Microwave Service Tower
 - Cellular Tower
 - Paging Transmission Tower
 - Land Mobile Commercial Tower
 - Antenna Structure Registrant
- Road or Highway**
- Interstate
 - U.S. or State Highway
 - Secondary State or County Highway
 - City or Town Boundary
 - County Boundary



Project Location: Chenango, Delaware, & Otsego Counties, NY
 Prepared by DG on 2024-08-02
 TR by AB on 2024-08-02
 IR by BS on 2024-10-23

Client/Project: Jennison Transmission Solution Project
 NYSEG CLCPA Program
 213415070 REVA

Figure No. **E-5-1**
 Title **Tower Locations Mapsheet Index**

U:\213415070\gis_cad\gis\project1\permitting\figure\Antioch\Antioch_VII\Exhibit_E-5_Effect_on_Communication.aprx Revised: 2024-11-14 By: abhattaral

U:\213415070\gis_cad\gis\project1_permitting\figure\Antiole\VI\Exhibit_E-51213415070_JTS_E5_Effect_on_Communication.aprx Revised: 2024-11-14 By: abhattaral



NYSEG
An Avangrid company



Jennison Transmission Solution Project

- Substation, Existing
- Proposed Right-of-Way
- 1-Mile Project Radius

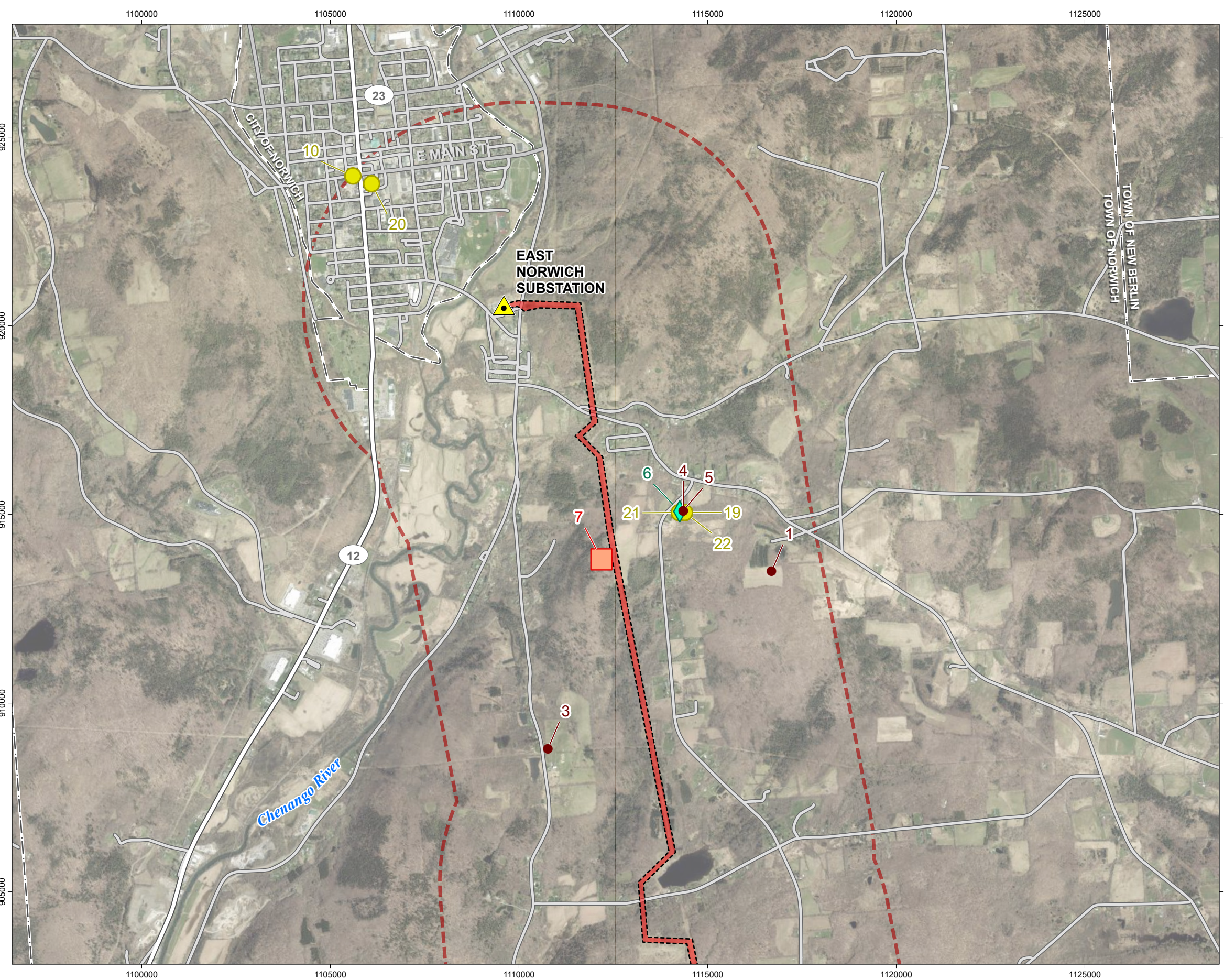
Federal Communications Commission (FCC) Tower (With Tower ID)

- FM Transmission Tower
- AM Transmission Tower
- Microwave Service Tower
- Cellular Tower

City or Town Boundary

Road or Highway

- U.S. or State Highway
- Secondary State or County Highway
- Local, Neighborhood, Rural or City Street



0 1,000 2,000
Feet
(At original document size of 11x17)
1:32,000

Notes
1. Data Sources: See Figure E-5-1 Mapsheet Index notes

Project Location: Chenango, Delaware, & Otsego Counties, NY
 Prepared by DG on 2024-08-02
 TR by AB on 2024-08-02
 IR by BS on 2024-10-18

Client/Project: Jennison Transmission Solution Project 213415070 REVA

NYSEG CLCPA Program

Figure No.

E-5-1

Title

**Tower Locations
Mapsheet 1 of 3**

U:\213415070\gis_cad\gis\project1_permitting\figure\Article\VI\Exhibit_E-51213415070_JTS_E5_Effect_on_Communication.aprx Revised: 2024-11-14 By: abhattaral



NYSEG
An Avangrid company



Jennison Transmission Solution Project

- Substation, Existing
- Substation, Proposed
- Proposed Right-of-Way
- 1-Mile Project Radius

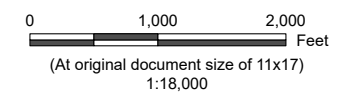
Federal Communications Commission (FCC) Tower (With Tower ID)

- Microwave Service Tower
- Cellular Tower

City or Town Boundary

Road or Highway

- Interstate
- Secondary State or County Highway
- Local, Neighborhood, Rural or City Street
- Village Boundary



Notes
1. Data Sources: See Figure E-5-1 Mapsheet Index notes

<i>Project Location</i> Chenango, Delaware, & Otsego Counties, NY	<i>Prepared by</i> DG on 2024-08-02 TR by AB on 2024-08-02 IR by BS on 2024-10-18
---	---

Client/Project Jennison Transmission Solution Project 213415070 REVA

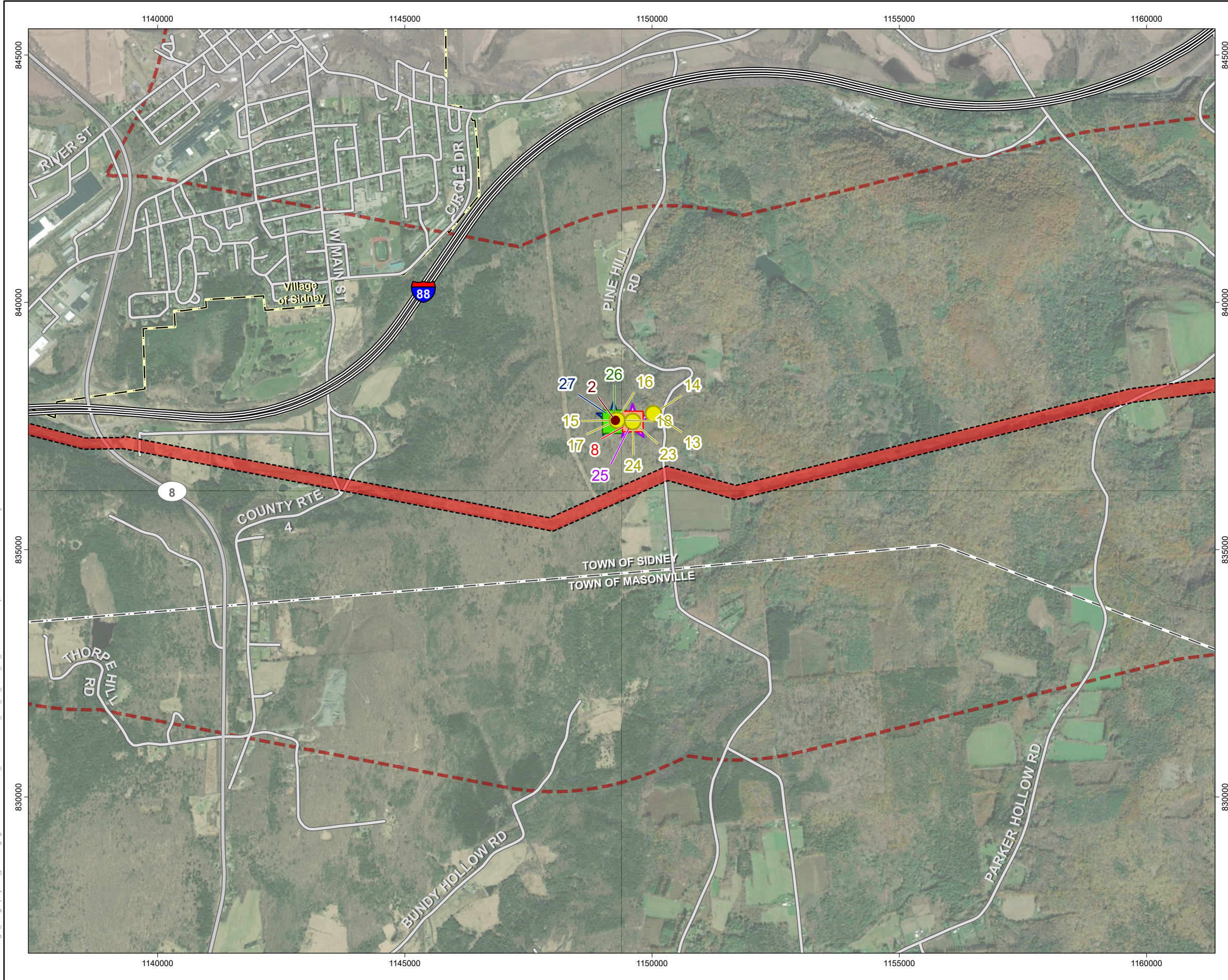
Client/Project NYSEG CLCPA Program

Figure No.

E-5-1

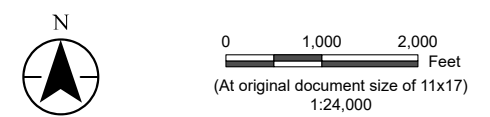
Title

**Tower Locations
Mapsheet 2 of 3**



Jennison Transmission Solution Project

- Proposed Right-of-Way
- 1-Mile Project Radius
- Federal Communications Commission (FCC) Tower (With Tower ID)**
- FM Transmission Tower
- Microwave Service Tower
- Cellular Tower
- Paging Transmission Tower
- Land Mobile Commercial Tower
- Antenna Structure Registrant
- City or Town Boundary
- Road or Highway**
- Interstate
- Secondary State or County Highway
- Local, Neighborhood, Rural or City Street
- 4WD Route
- Village Boundary



Notes
 1. Data Sources: See Figure E-5-1 Mapsheet Index notes

Project Location: Chenango, Delaware, & Otsego Counties, NY
 Prepared by DG on 2024-08-02
 TR by AB on 2024-08-02
 IR by BS on 2024-10-18

Client/Project: Jennison Transmission Solution Project
 NYSEG CLCPA Program
 213415070 REVA

Figure No. **E-5-1**
 Title **Tower Locations Mapsheet 3 of 3**

U:\213415070\gis_cad\gis_project1\permitting\figure\Article VII\Exhibit E-51\213415070_JTS_E5_Effect_on_Communication.aprx Revised: 2024-11-14 By: abhattaral

This page intentionally left blank.